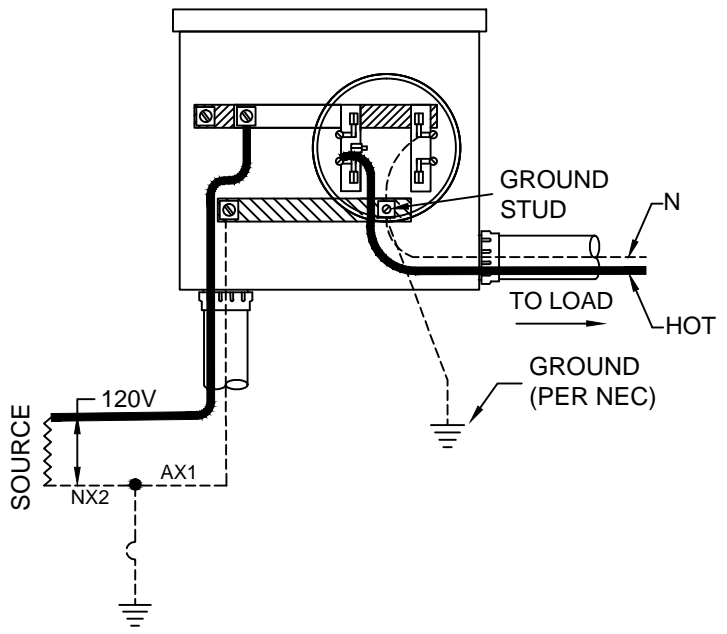


TYPE S
2 WIRE SINGLE PHASE 120 VOLTS




TYPE S
2 WIRE SINGLE PHASE 120 VOLTS

FOR REFERENCE ONLY:

REQUIRES PRIOR COMPANY APPROVAL

- NOTES:**
 1. LOAD AND SUPPLY WIRES SHALL NOT CROSS IN THE METER SOCKET.
 2. 100 AMPS ONLY.

ENTERGY SERVICES, INC. WIRING DIAGRAM CONNECTIONS FOR 120V (TWO WIRE) SELF CONTAINED METERS			
APPROVED BY:	JRH	DATE:	04/03/2013
CHECKED BY:	JED	SCALE:	NONE
DRAWN BY:	krich95		
		No. D9-1	
PLOT 1=1		SH. 1 OF 1	

2	06/15/17	Updated title as needed	ERG	
1	04/13	NEW DRAWING	JED	
NO.	DATE:	REVISION	BY:	APPR: